

The New Generation Of Dermal Fillers

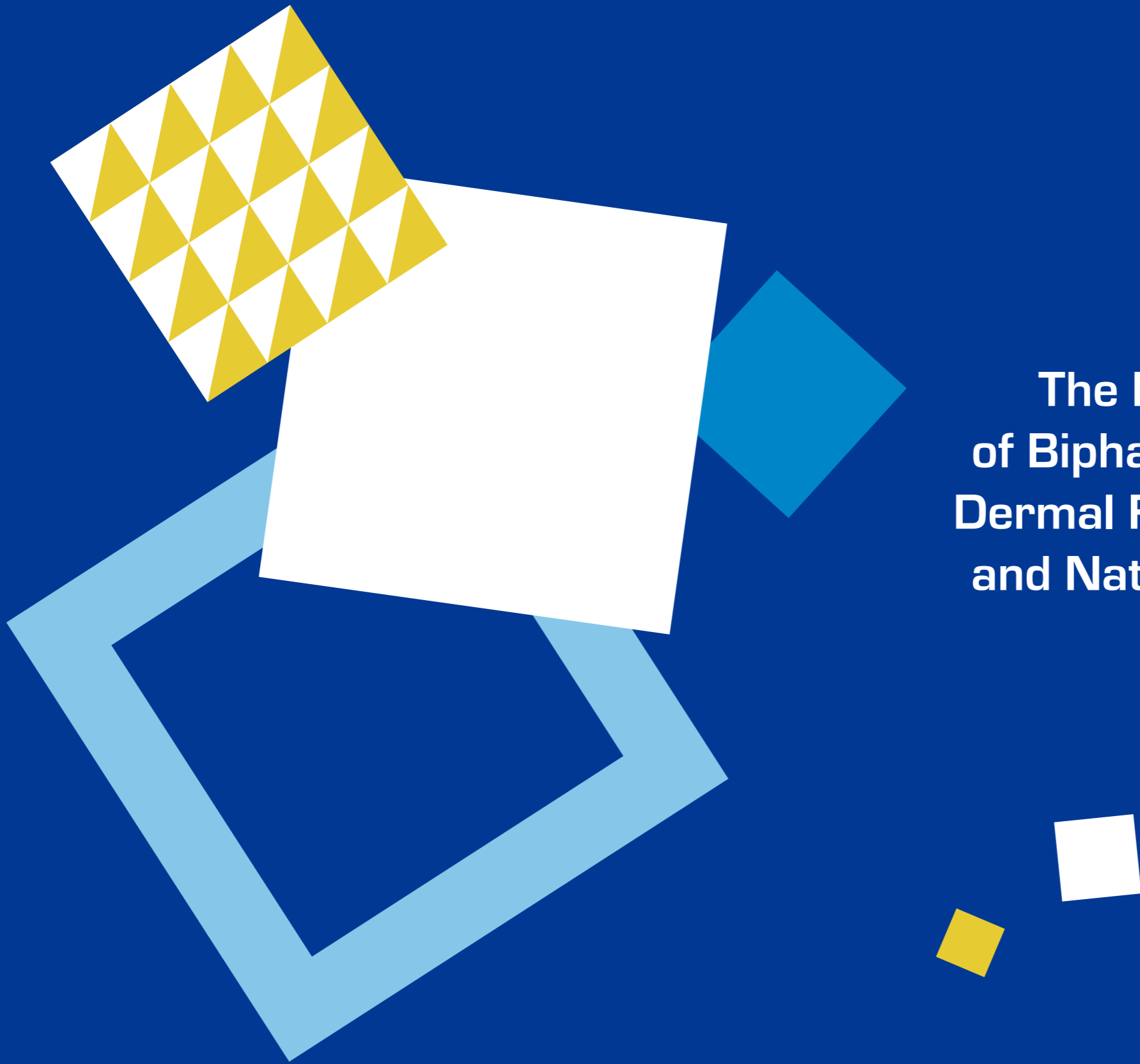
Bio | SCIENCE

Walsmühler Straße 18, Dümmer, Germany
Tel: +49 (0) 2602 / 83 868-0 Fax: +49 (0) 2602 / 83 868-20
Email: info@genefill.com
www.genefill.com
www.biosciencegmbh.com

GENEFILL



**The New Generation
of Biphasic Hyaluronic Acid
Dermal Fillers for Soft Touch
and Natural-looking Effects**



Experts in Injectable Hyaluronic Acid since 2001

BioScience is a German expert in the field of aesthetics, committed to helping people in maintaining a youthful appearance and ultimately improving their overall quality of life.

The base of our expertise comes from a holistic approach to the manufacturing process of injectable products for the health industry. Since 2001, we have been developing them for various medical fields, such as dentistry, general surgery, urology, and orthopedics.

Since entering the aesthetics market in 2006, our knowledge and experience have brought us the trust of the most recognized plastic surgeons and dermatologists worldwide.

Our product portfolio is the result of the most in-depth evaluations.

For over twenty years on the market, the state-of-the-art research facilities in Dümmer, Germany have developed a varied number of unique technologies, such as Advanced Thixotropy Technology (ATT). The main priority has always been to address the customers' needs and make them satisfied with our highest safety products.

As Training and Research are the pillars for our development and growth, we work with internationally renowned doctors in the field of plastic surgery, dermatology and aesthetics that contributes to the development of our products, thanks to their knowledge and expertise. As part of an ongoing alignment to the global standards, BioScience also maintains relationships and collaborations with research institutes, as well as international societies of plastic surgeons and dermatologists worldwide.



Dr Klaus Laeschke
Founder of BioScience

Safety Is Our Top Priority

Proven by the most respected and reputable notified bodies, the exceptional safety profile of our products is the result of two decades of experience in manufacturing hyaluronic acid of the highest purity and non-animal origin in the state-of-the-art facilities.

The selection of the best procedures to produce stable, highly pure and injection-optimized products is at the heart of our expert team.

We follow the strictest quality and safety standards while developing our products. In the manufacturing process of GeneFill we only use the highest-grade raw materials of non-animal origin.

As a continuous commitment to improving the safety of doctors and patients, we regularly conduct clinical trials to test and re-confirm the quality of our devices. Each batch of medical products is tested by our contracted laboratory for its Endotoxin level that is $<0,25\text{EU/mL}$ which is in accordance with the limits set up for injectable products in compliance with European Union and brought to the market only when it is verified to be less than half of the required European limits for patient safety.



Subtle Skin Enhancement Within Its Natural Contours

The potential of hyaluronic acid dermal fillers to restore smooth and elastic skin and to give a youthful contour has made them one of the fastest-growing non-invasive aesthetic procedures for achieving subtle, natural, yet noticeable results.

While cosmetic surgery procedures are becoming more socially acceptable and affordable, a vast number of patients don't aim for a drastic look transformation.

Instead, they desire a soft and delicate boost in their appearance that will not only improve the skin firmness with no post-procedure downtime, but also embrace their self-care and confidence.

Over the past years, we have also seen an explosion in the popularity of non-invasive cosmetic procedures among younger patients who are looking for remaining youthful so that in the future the signs of aging are not too noticeable*.

A natural look result is then essential.

Your patients want to look like themselves but with a few refined tweaks so they don't have to be afraid of looking unnatural. The artificial outcome is one of the reasons that stop them from deciding for cosmetic treatments, with 41% stating the fear of looking fake as their main concern*.

*2018 Annual Survey of the American Academy of Facial Plastic & Reconstructive Surgery (AAFPRS)



Soft Dermal Fillers for Natural Effects

GeneFill products have been specifically designed with the aim of natural effects and application ease.

With the innovative manufacturing process, they stimulate the dermis to work actively against the aging process, hydrating and reviving the skin with firmness and elasticity, enhancing natural proportions and respecting the original face and body contour. All of them are based on cross-linked hyaluronic acid of non-animal origin to achieve radiant appearance and optimal hydration with minimized risk of any allergic reactions.

GeneFill improves the skin quality and ultimately preserves it over time, while progressively enhancing its texture.



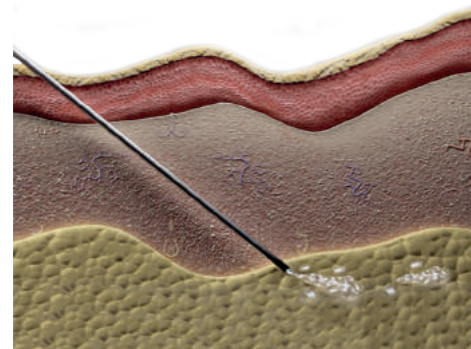
Advanced Thixotropic Technology

The core of Genefill is defined by the **Advanced Thixotropic Technology (ATT)**, which determines how gel molecules behave during and after injection to ensure the most desirable qualities of hyaluronic acid dermal fillers: a smooth application and a strong stability degree.

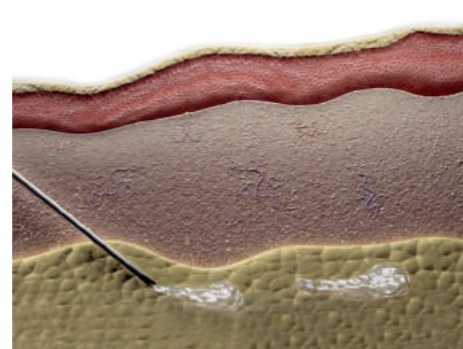
This special manufacturing process provides highly stable cross-linked HA molecules that allow Genefill gel to become less viscous under injecting pressure. For that reason, Genefill can be injected with reduced force and thinner needles, minimizing the pain level and giving the patient an optimal treatment comfort.

Hyaluronic acid molecules in conventional gels tend to permanently break down when exposed to injecting pressure, which negatively impacts fillers' duration and their efficacy in the dermis. Molecules with enhanced thixotropic behavior in Genefill gels, return to their original viscosity when pressure from the syringe is released, which results in a long-lasting and stable effect

Standard Injection



The Genefill Injection



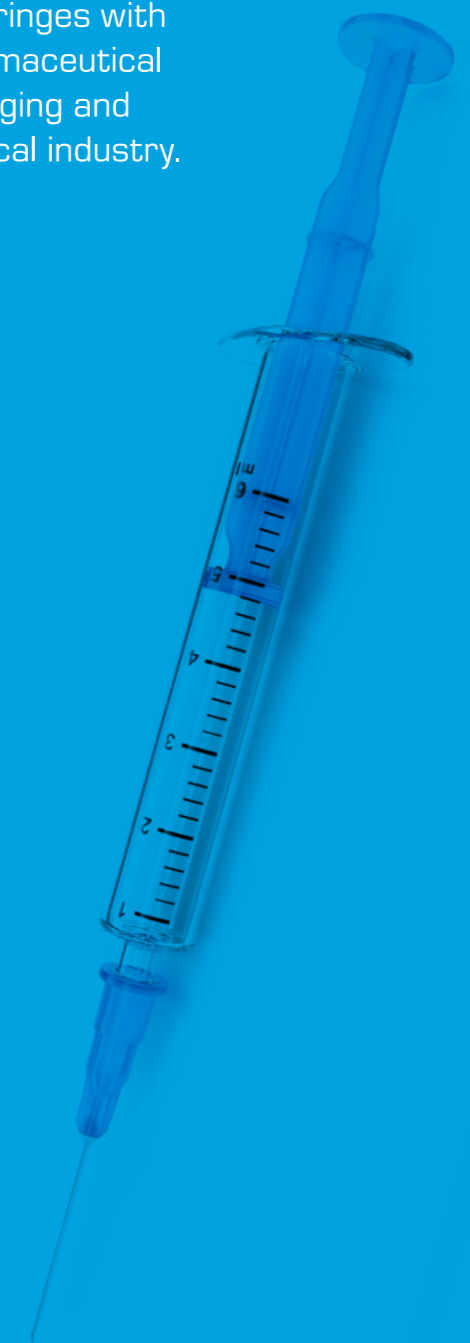
Injecting Genefill

During daily aesthetic treatments, our top priority is to ensure the maximum convenience and satisfaction.

Genefill products have been designed in collaboration with experienced doctors and medical professionals to optimize the tissue integration and ultimately achieve treatment goals.

In all of our dermal fillers we use SCHOTT TopPac® syringes with integrated Luer Lock, manufactured by SCHOTT Pharmaceutical Systems, the world's leading supplier of primary packaging and specialized analytical lab services for the pharmaceutical industry.

- ◆ **Safe application**
Solid components for the maximum level of comfort and precise handling
- ◆ **Injection control**
Reduced level of the injection force and a good scale readability for optimal volume supervision
- ◆ **First-class quality**
Premium materials meeting the strict safety requirements.
- ◆ **Smooth gel**
Homogenous consistency for even skin integration and subtle effects
- ◆ **Effortless administration**
Easiness to adjust and regain the original viscosity of the product for uninterrupted gel flow



Face Indications

- 1 Fine Lines & Rejuvenation
Genefill FINE
- 2 Mid to Deep Wrinkles
Genefill SOFT TOUCH
Genefill SOFT FILL
Genefill DX
- 3 Nasal Bridge
Genefill SOFT FILL
- 4 Cheek Augmentation
Genefill SOFT FILL
Genefill DX
- 5 Lip Augmentation
& Contouring
Genefill SOFT TOUCH
Genefill SOFT FILL
- 6 Jawline & Chin
Genefill SOFT FILL
Genefill DX



Body Indications

- 1 **BUTTOCKS**
Genefill CONTOUR
Genefill CONTOUR PLUS
- 2 **CALVES**
Genefill CONTOUR
Genefill CONTOUR PLUS
- 3 **CORRECTION OF
CONCAVE DEFORMITIES**
Genefill CONTOUR
Genefill CONTOUR PLUS
- 4 **HANDS**
Genefill CONTOUR



Before and After

Hands
Before



After



Cheeks
Before



After



Calves
Before



After



Lips
Before



After



Hip Dips
Before



After



Jawline
Before



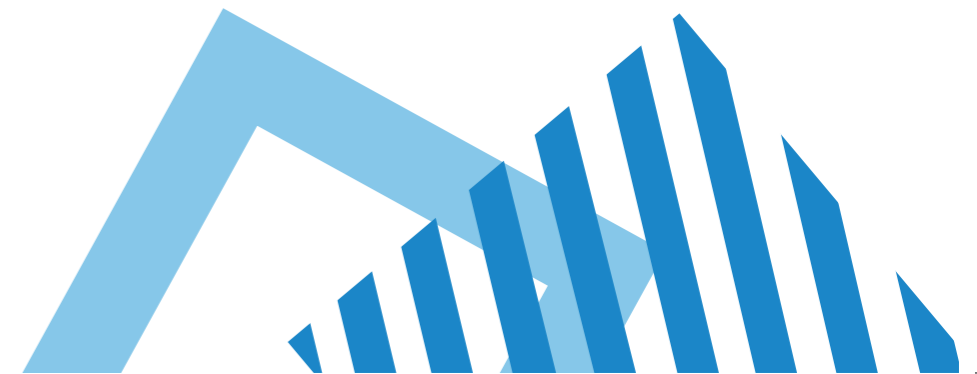
After



Buttocks
Before



After



SPECIFICATION

Products	GeneFill FINE	GeneFill SOFT TOUCH	GeneFill SOFT FILL	GeneFill CONTOUR	GeneFill CONTOUR PLUS	GeneFill DX
Indication	Fine lines and rejuvenation	Mid to deep wrinkles, lip augmentation and contouring	Mid to deep wrinkles, nasal bridge, cheek augmentation, lip augmentation, jawline, chin, glabella folds	Hands, calves, buttocks, other body concave deformities	Buttocks augmentation, calves and other body concave deformities.	Mid to deep wrinkles, cheek augmentation, jawline, chin
Benefits	Skin revitalization and hydration, increased elasticity	Revitalization, volume replacement and augmentation, improved skin texture	Restoration of the facial volume and contour. Stronger smoothing effect	Contouring, Correction, Augmentation and Filling Effect	Restoring volume, create projection & structure, and contouring of buttocks areas	Augmentation, skin hydration, increased elasticity, filling and smoothing effect
Non-cross-linked Hyaluronic Acid (per 1.0ml)	14mg	2mg	2mg	2 mg	2mg	
Cross-linked Hyaluronic Acid (per 1.0ml)	-	16mg	20mg	20mg	20mg	14mg with 50mg of dextranomer per 1.0ml of product
Particle Size				200 - 350 µm	300 - 500 µm	
Volume per Syringe	1.0ml	1.0ml	1.0ml	10.0ml	10.0ml	1.0ml
Cannula	Included Needle: 30G	Included Needle: 30G	Included Needle: 30G	Advised Cannula: 18G / 22G	Advised Cannula: 18G / 22G	Included Needle: 25G
Injection Depth	Hyperdermis	Mid-dermis	Mid-dermis	Hypodermis	Hypodermis	Hypodermis

Products

The Genefill product family is a comprehensive range of biphasic face and body dermal fillers that treats various skin layers. It is a solution for the needs of the most demanding patients to achieve defined contours, lift and volumize skin, as well as minimize the visibility of fine lines and wrinkles.

Genefill FINE



INDICATION: Fine lines and rejuvenation

BENEFITS: Skin revitalization and hydration, increased elasticity

NON-CROSS-LINKED HA: 14mg/ml

VOLUME PER SYRINGE: 1.0ml

INCLUDED NEEDLE: 30G

INJECTION DEPTH: Hyperdermis

Genefill SOFT TOUCH



INDICATION: Mid to deep wrinkles, lip augmentation and contouring

BENEFITS: Revitalization, volume replacement and augmentation, improved skin texture

NON-CROSS-LINKED HA: 2mg/ml

CROSS-LINKED HA: 16mg/ml

VOLUME PER SYRINGE: 1.0ml

INCLUDED NEEDLE: 30 G

INJECTION DEPTH: Mid-dermis

Genefill SOFT FILL



INDICATION: Mid to deep wrinkles, nasal bridge, cheek augmentation, lip augmentation, jawline, chin, glabella folds

BENEFITS: Restoration of the facial volume and contour. Stronger smoothing effect

NON-CROSS-LINKED HA: 2mg/ml

CROSS-LINKED HA: 20mg/ml

VOLUME PER SYRINGE: 1.0ml

INCLUDED NEEDLE: 30 G

INJECTION DEPTH: Mid-dermis

INDICATION: Hands, calves, buttocks, other body concave deformities

BENEFITS: Contouring, correction, augmentation and filling effect

NON-CROSS-LINKED HA: 2mg/ml

CROSS-LINKED HA: 20mg/ml

PARTICLE SIZE: 200 - 350 µm

VOLUME PER SYRINGE: 10.0ml

ADVISED CANNULA: 18 G / 22 G

INJECTION DEPTH: Hypodermis

INDICATION: Hands, Calves, Buttocks, Other Body Concave Deformities

BENEFITS: Contouring, correction, augmentation and filling effect

NON-CROSS-LINKED HA: 2 mg/ml

PARTICLE SIZE: 300 - 500 µm

CROSS-LINKED HA: 20 mg/ml

ADVISED CANNULA: 18G / 22G

INJECTION DEPTH: Hypodermis

Genefill CONTOUR



Genefill CONTOUR PLUS⁺



Cross-linked Hyaluronic Acid with Dextranomer to Stimulate Collagen Production

Genefill DX is a fully biocompatible, biphasic and biodegradable product with a high viscosity gel that combines pure hyaluronic acid obtained through the bio-fermentation process and active dextranomer to volumize and hydrate the skin as well as provide augmentation effect and stimulate the collagen production.

Genefill's key ingredient is the Dextranomer, responsible for inducing collagen and elastin production as well as helping with the regeneration of the tissue.

The positively charged dextran beads that repair the macrophage cells and stimulate fibroblasts to produce collagen and elastin fibers, allow a regeneration of the dermal matrix with the same composition of a young skin.

With the use of dextranomer, a stability and long-lasting effect of the product is ensured. This happens since the newly collagen and elastin fibers stay at the injection site even after the absorption of the hyaluronic acid and dextranomer.



INDICATION

Mid to deep wrinkles, cheek augmentation, jawline, chin

BENEFITS

Augmentation, skin hydration, increased elasticity, filling and smoothing effect, gives structure and support to the skin

CROSS-LINKED HA

14mg/ml

DEXTRANOMER

50mg/ml

VOLUME PER SYRINGE

1.0ml

INCLUDED NEEDLE

25G

INJECTION DEPTH

Hypodermis